

## NC Press Brake WC67K-250T/3200 E21



### Main Features:

- 1 . The whole EU streamlined design, heat treatment rack, high rigidity worktable, optional mechanical crowning device, to achieve precision bending .
- 2 . Hydraulic synchronous control and Estun NC programmable logic controller ensure accurate repeatability and ease use .
- 3 . Integrated hydraulic system (Bosch Rexroth Germany) allows automatically switch to slow bends in a quick way.
- 4 . X axis and Y axis realize accurate positioning function by frequency converter through NC E21 system programming control .
- 5 . Cutting-edge frequency response hydraulic control technology, more stable machine tools, more reliable operation .
- 6 . The best ratio of parameters, optimal core configuration ensure stable performance, more convenient operation .
- 7 . WC67K standard single-axis back gauge system and single-axis bending angle system, you can choose to add the V-axis crowning function, and select the appropriate mold to bend complex shape workpieces easily .

### Main Configuration:

- Estun E21 NC control system
- Y-axis and X-axis system control adjustment
- Delta frequency converter controls the positioning of X axis and Y axis
- Using HIWIN ball screw and light bar to ensure the accuracy of 0 . 05mm .
- Clip-on quick clampings
- Front holder support
- Germany Bosch Rexroth hydraulic valve block
- Germany EMB oil tube connector
- Germany Siemens main motor
- France Schneider Electric
- Hydraulic and electrical overload protection
- Top and bottom dies (86 ° , R0 . 6mm, material: 42CrMo)

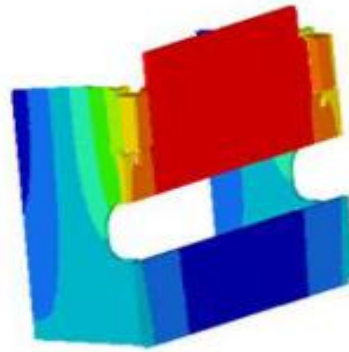
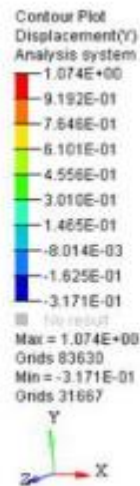
# KRRASS<sup>®</sup>

## MACHINE BLOCK:

KRRASS<sup>®</sup> press brake features a rigid frame for min deflection under the load. The frame steels are German origin and designed using SOLIDWORKS 3D programming and made with quality steel Improved Q235 using the latest technology.

### Feature:

- The machine welding is made by welding apparatus and welding robots.
- After the welding, we make stress relief process by vibration system.
- After the stress relief process machine frame goes to CNC 5 axes machining centers for accuracy.
- All reference surfaces and connection holes are machined.
- By all these processes machine frame sensitivity is protected for a long life time.



## PRO S PRESS BRAKE CYLINDERS:

In order to allow tilting of the ram without damage, because we use spherical connections. This type of connection also allows peak forces to be absorbed gently.

### Advantage:

- High-Speed Free Fall
- High Bending Speed
- High Return Speed
- Very low noise level.



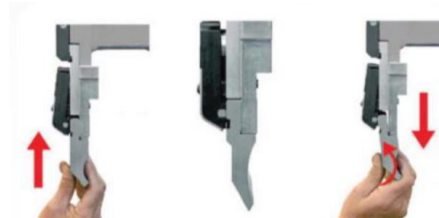
- Free-fall bending & return speeds of EURO PRO S press brakes series makes it the best choice to meet demands in today's competitive markets.
- PRO S series offer twice as fast production capacity compared to conventional NC press brakes.

## SPEED GRIP SYSTEM:

The speed grip system reduces the time spent changing tools by 80% compared with traditional systems.

### Advantage:

- Vertical tool exchange
- Safety guard
- including selectable intermediates



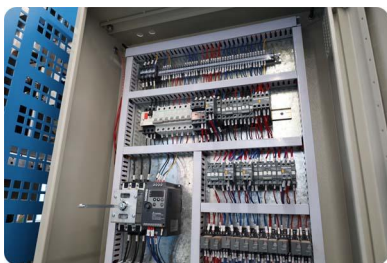
# KRRASS<sup>®</sup>

## Features:

- Backgauge control
- Control the common motor or inverter
- Intelligent positioning
- Holding pressure unloading time setting
- Workpiece counting
- 40 programs stored, 25 steps per program
- Unilateral positioning
- Concession function
- One-key backup / restore
- mm / inch
- Chinese / English



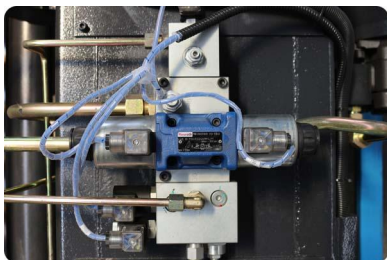
## SHEARING PROCESS:



Schneider Electric-France



KRRASS Pedal Switch



Bosch Rexroth Valve-Germany



Sunny Oil Pump-USA



Siemens/Wannan Motor



Quick Clamps



High-Precision fine-tuning  
back finger stopper



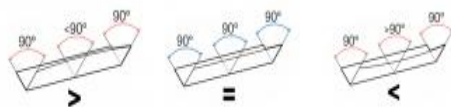
Backgauge use ball screw and  
linear guide rail

## MANUAL MACHANICAL CROWNING SYSTEM(Standard):

The system allows the user to manually control the deformation of the beam during bending. Therefore, the angle remains constant throughout the length of the board.

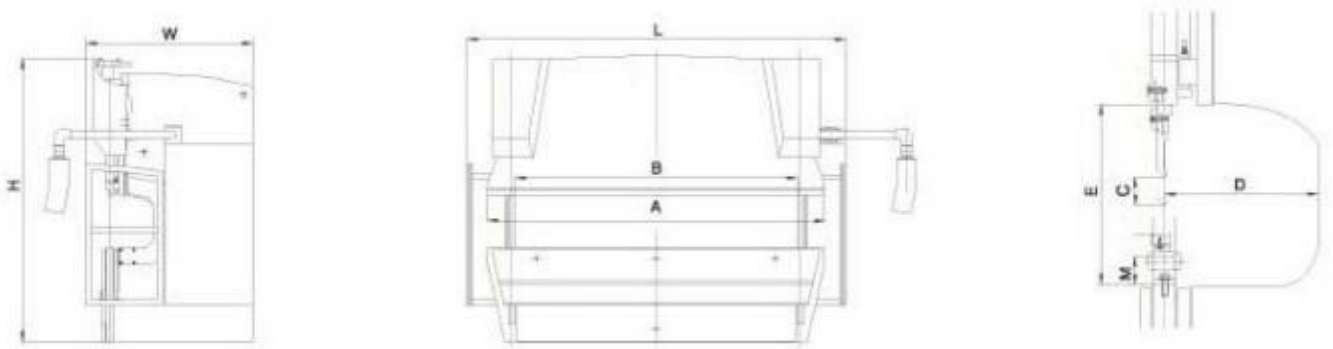
### Advantage:

The convexity system is controlled by hand to automatically execute the convexity and make the part in a uniform bending angle at any given point.



## TECHNOLOGIES:

No .	Name	Unit	250T/3200
1-	Bending Pressure	kn	2500
2-	Bendling Length (A)	mm	3200
3-	Vertical Column Distance (B)	mm	2450
4-	Throat Depth(D)	mm	400
5-	Slider Stroke(C)	mm	250
6-	Max. opening Height (E)	mm	590
7-	Y-axis Downward Speed(Non load)	mm / sec	90
8-	Y-axis Back Stroke Speed	mm / sec	86
9-	Bending Angle Precision	°	<±0.5
10-	X-axis Max.Distance	mm	500
11-	Workpiece Linearity	mm/m	0.5
12-	Backgauge Accuracy	mm/m	0.05
13-	Sliding Front Supporting Arms	pcs	2
14-	Back Stopper	pcs	3
15-	Main Motor	kw	18.5
16-	CNC System	-	E21
17-	Length*Width*Height	mm	3250*2000*3200
18-	Weight	kg	18500



## Standard Configuration List:

No .	Accessory Name	Model/Manufacturer	Others
1-	NC Controller	■ E21 Controller Estun	
2-	Electrics	France SchneiderElectric	Travel switch & Limit switch
3-	Main Motor	Siemens/Wannan Motor	
4-	Back gauge, synchronous belt, synchronous wheel	Taiwan, China	positioning control
			Guaranteed precision
5-	Frequency Converter	JRACDRIVE	positioning control
			Guaranteed precision
6-	Pedal Switch	KRRASS	
7-	Backgauge	Ball screw linear guide rail	
8-	Hydraulic system	Bosch Rexroth-Germany	
9-	Oil Pump	SUNNY- USA	
10-	Sealing Ring	PARKER America	
11-	Oil Tube Connector	Casing connector	
12-	Front Safety Guard	Produced by KRRASS	
13-	Back Safety Guard	Produced by KRRASS	
14-	Die	One set of standard dies	
15-	Clamping	Quick clamping	
16-	MACHANICAL CROWNING	MANUAL MACHANICAL CROWNING	